



**AUSTMARINE MFG. PTY LTD.**

PO Box 1172 Runaway Bay 4216 Gold Coast Qld Australia

Tel: 61-7-55290088 Fax: 61-7-55290068

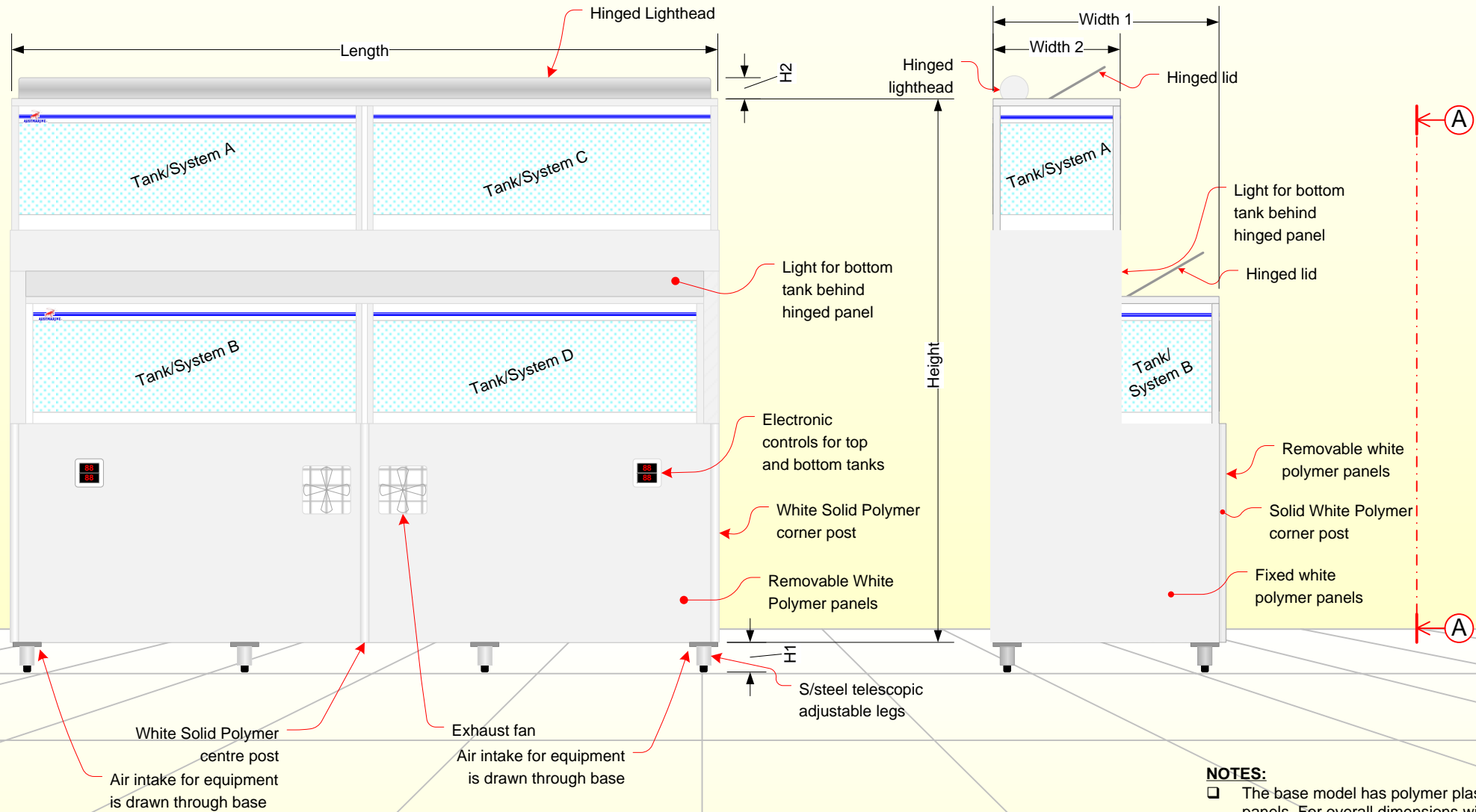
Website: www.austmarine.com.au E-mail: mike@austmarine.com.au

TITLE RETAIL MODELS		DESCRIPTION Elevation Views showing overall appearance.	
SHEET SIZE A4	DRAWN BY MIKE HANRAHAN	VIEW Two Tier Quad temperature models	

The information contained remains the Intellectual property of Austmarine

**Access Side Elevation View AA**

**End Elevation View**



**NOTES:**

- ❑ The base model has polymer plastic panels. For overall dimensions with panels, add on 50mm to the length and 45mm to the width.
- ❑ Higher legs can be provided and priced on request.
- ❑ Transparent dividers to subdivide the tank can be provided on request.

Model	Length mm	Width1 mm	Width2 mm	Height mm	H1 mm	H2 mm	Seafood Capacity	Water Capacity	Gross Weight	Electrical Supply
MT2400 Quad	2400	800	450	1925	100	90	200kg	1460Lt	2360kg	220-250VAC 3.6KW